

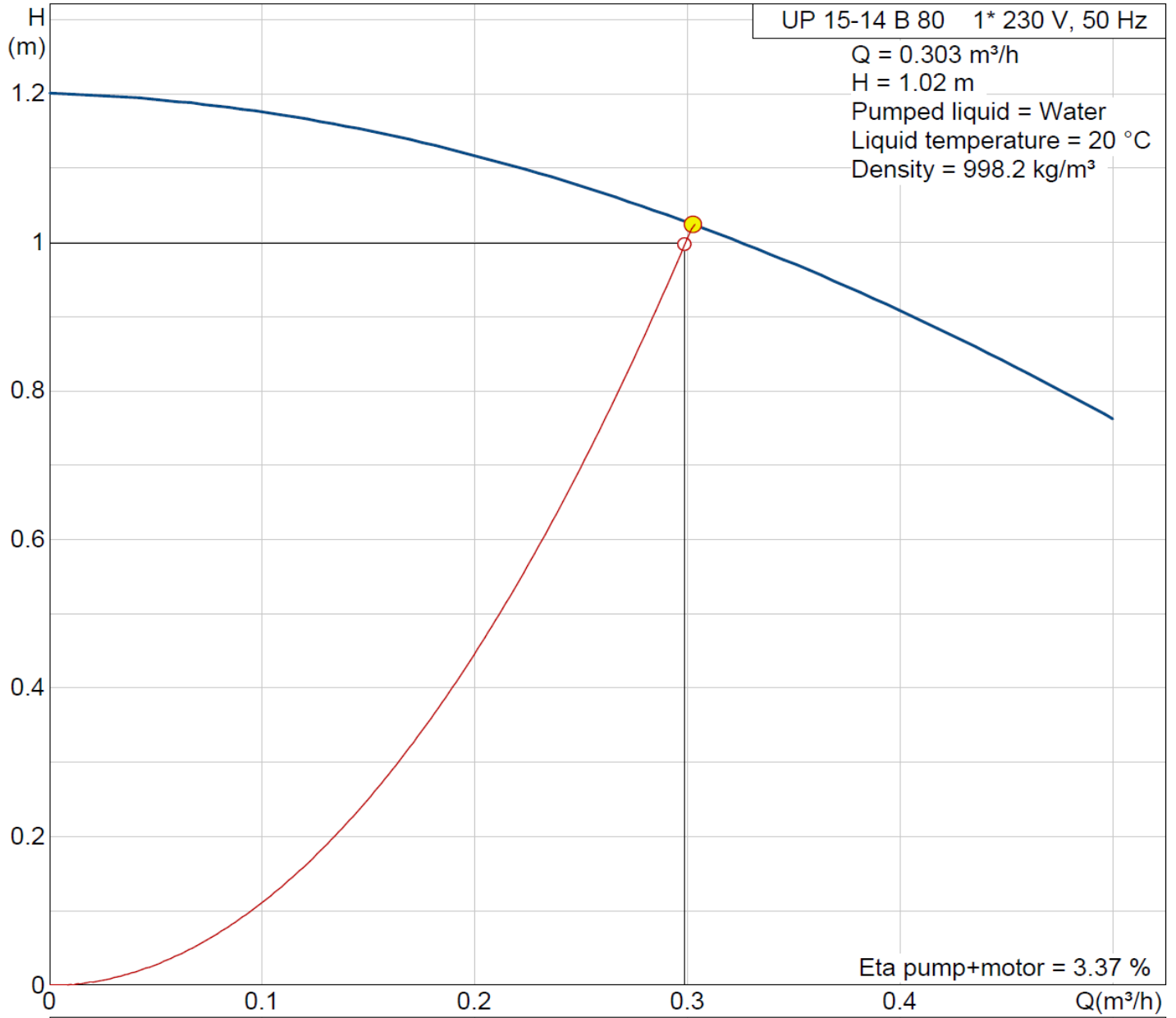


Position	Qty.	Description	Single Price
	1	<p><b>UP 15-14 B 80</b></p>  <p>Note! Product picture may differ from actual product</p> <p>Product No.: 96433883                      The pump is equipped with a spherical motor. In contradistinction to the conventional canned-rotor motors, the spherical motor does not have a rotating bearing shaft. The stator transfers the magnetic field to the rotor in the water-conducting part of the pump. The pump is only suitable for pressurised hot water systems.</p> <p>The water-conducting part of the pump is hermetically separated from the stator with a stainless steel spherical separator.</p> <p><b>The pump is characterized by:</b></p> <ul style="list-style-type: none"> <li>* Self-adjusting, gimbal-mounted rotor bearing lubricated by the pumped liquid.</li> <li>* High-quality bearing material.</li> <li>* The motor can be separated from the pump housing, enabling easy maintenance and replacement.</li> <li>* Corrosion-resistant impeller, Stainless steel, EPDM, PPO, PTFE, Graphit.</li> <li>* Brass pump housing.</li> </ul> <p>The motor is a single-phase motor. It does not require external motor protection.</p> <p><b>Liquid:</b></p> <p>Liquid temperature range: 2 .. 95 °C                      Liquid temp: 20 °C                      Density: 998.2 kg/m<sup>3</sup></p> <p><b>Technical:</b></p> <p>TF class: 95                      Approvals on nameplate: VDE,BSI,B,CE</p> <p><b>Materials:</b></p> <p>Pump housing: Brass MS 68                      Impeller: Stainless steel, EPDM, PPO, PTFE, Graphit</p> <p><b>Installation:</b></p> <p>Maximum operating pressure: 10 bar                      Pipe connection: Rp 1/2                      Port-to-port length: 80 mm</p> <p><b>Electrical data:</b></p>	Price on request

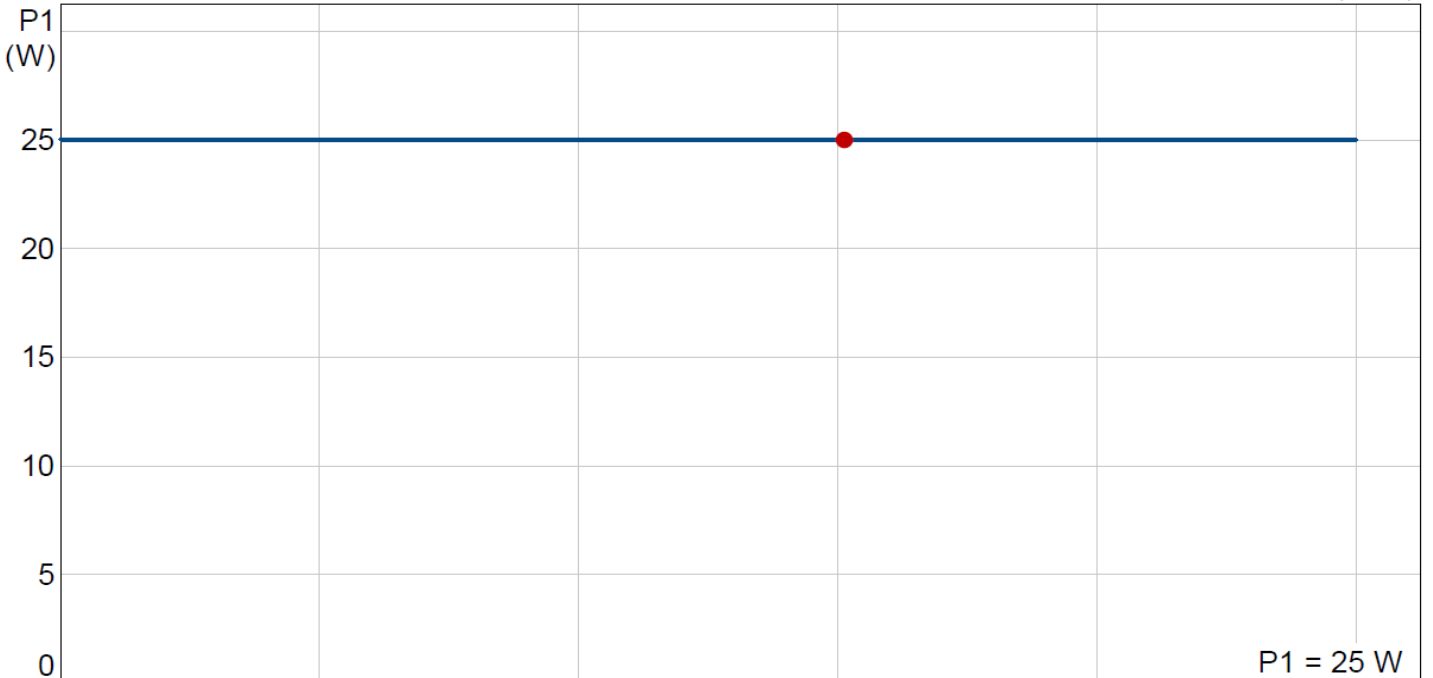
Position	Qty.	Description	Single Price
		<p>Max. power input: 25 W</p> <p>Mains frequency: 50 Hz</p> <p>Rated voltage: 1 x 230 V</p> <p>Current in speed 3: 0.11 A</p> <p>Capacitor size - run: 0.6 µF</p> <p>Enclosure class (IEC 34-5): 42</p> <p>Insulation class (IEC 85): F</p> <p><b>Others:</b></p> <p>Net weight: 1 kg</p> <p>Gross weight: 1.12 kg</p> <p>Shipping volume: 0.003 m3</p>	



## 96433883 UP 15-14 B 80 50 Hz

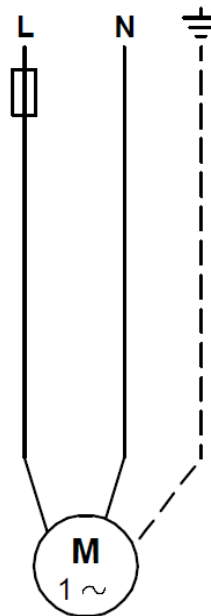
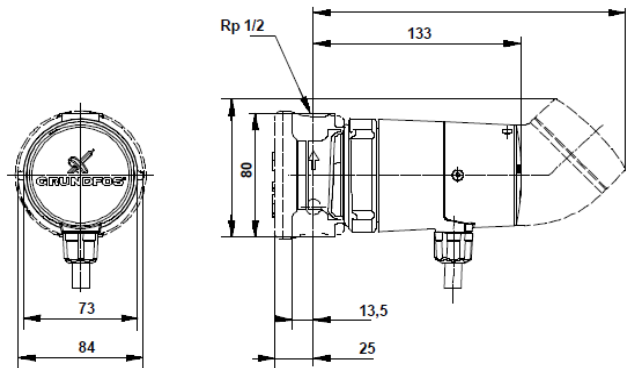
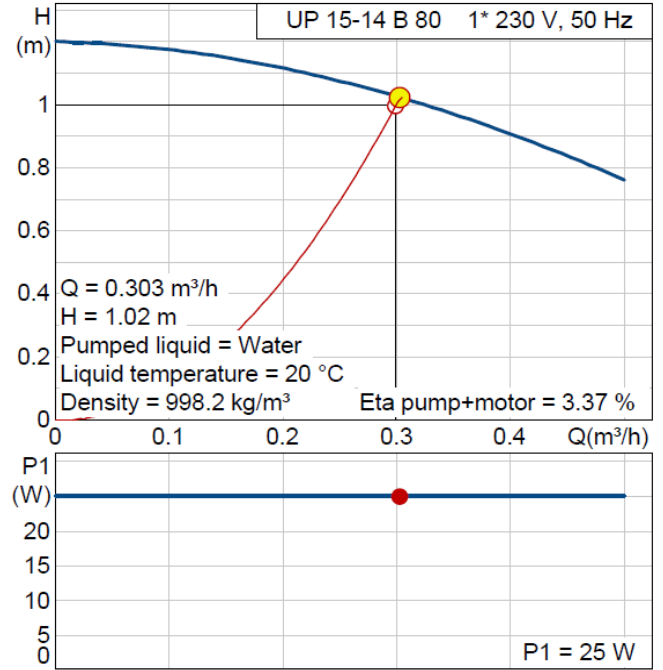


Eta pump+motor = 3.37 %

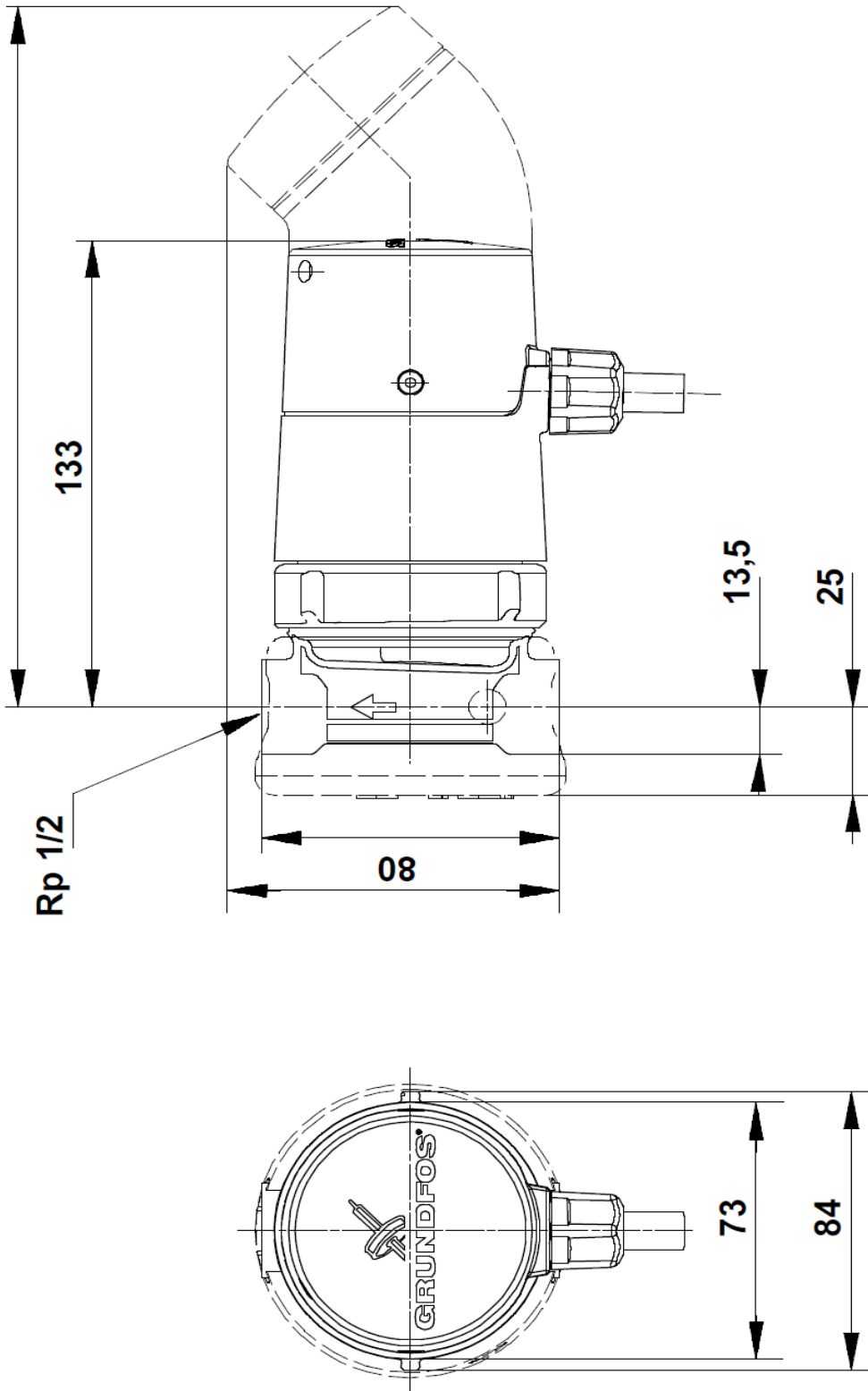


P1 = 25 W

Description	Value
Product name:	UP 15-14 B 80
Product No:	96433883
EAN number:	5700393609549
Price:	On request
<b>Technical:</b>	
Speed no:	1
Head max:	14 dm
TF class:	95
Approvals on nameplate:	VDE,BSI,B,CE
<b>Materials:</b>	
Pump housing:	Brass MS 68
Impeller:	Stainless steel, EPDM, PPO, PTFE, Graphit
<b>Installation:</b>	
Maximum operating pressure:	10 bar
Pipe connection:	Rp 1/2
Port-to-port length:	80 mm
<b>Liquid:</b>	
Liquid temperature range:	2 .. 95 °C
Liquid temp:	20 °C
Density:	998.2 kg/m <sup>3</sup>
<b>Electrical data:</b>	
Max. power input:	25 W
Mains frequency:	50 Hz
Rated voltage:	1 x 230 V
Current in speed 3:	0.11 A
Capacitor size - run:	0.6 µF
Enclosure class (IEC 34-5):	42
Insulation class (IEC 85):	F
Motor protec:	NONE
Thermal protec:	Impedance protected
<b>Others:</b>	
Net weight:	1 kg
Gross weight:	1.12 kg
Shipping volume:	0.003 m <sup>3</sup>



96433883 UP 15-14 B 80 50 Hz



Note! All units are in [mm] unless others are stated.

Disclaimer: This simplified dimensional drawing does not show all details.

96433883 UP 15-14 B 80 50 Hz

